

Our Principals - ZAMEP



Multistage Centrifugal Pump

WPS / WPS-M



WPS / WPS-M pumps

Q=25 up 350m³/h
H=40 up 380m

Applications

Mine dewatering, Portable water supply, Industrial systems

WPW / WPWE



WPW / WPWE pumps

Q=80 up 880m³/h
H=140 up 820m

Applications

Mine dewatering, Boiler feeding, Water desalination, Industrial systems

WPWH



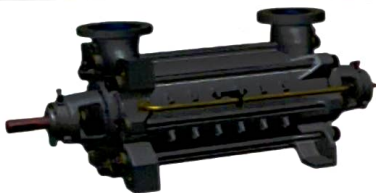
WPWH pumps

Q=280 up 680m³/h
H=340 up 1080m

Applications

Mine dewatering, Boiler feeding, Industrial systems

SPW



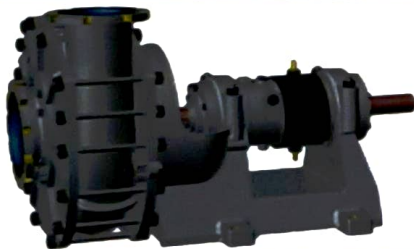
SPW pumps

Q=250 up 450m³/h
H=400 up 1570m

Applications

Mine dewatering, Water desalination, Boiler feeding

WPJ



WPJ pumps

Q=50 + 1150m³/h
H=15 + 110m (possibility of serial connections)

Applications

Pump for liquids with intensive mechanical contamination (max. contaminants diameter: 57 mm), Hydro transport (up to 50% solid particles), Land drainage, Sewage treatment plants

WPCC



WPCC pumps

Q=45 + 480m³/h
H=15 + 55m (possibility of serial connections)

Applications

Pump for liquids with intensive mechanical contamination (max. contaminants diameter: 40 mm), Hydro transport (up to 50% solid particles), Land drainage, Sewage treatment plants

WPZ



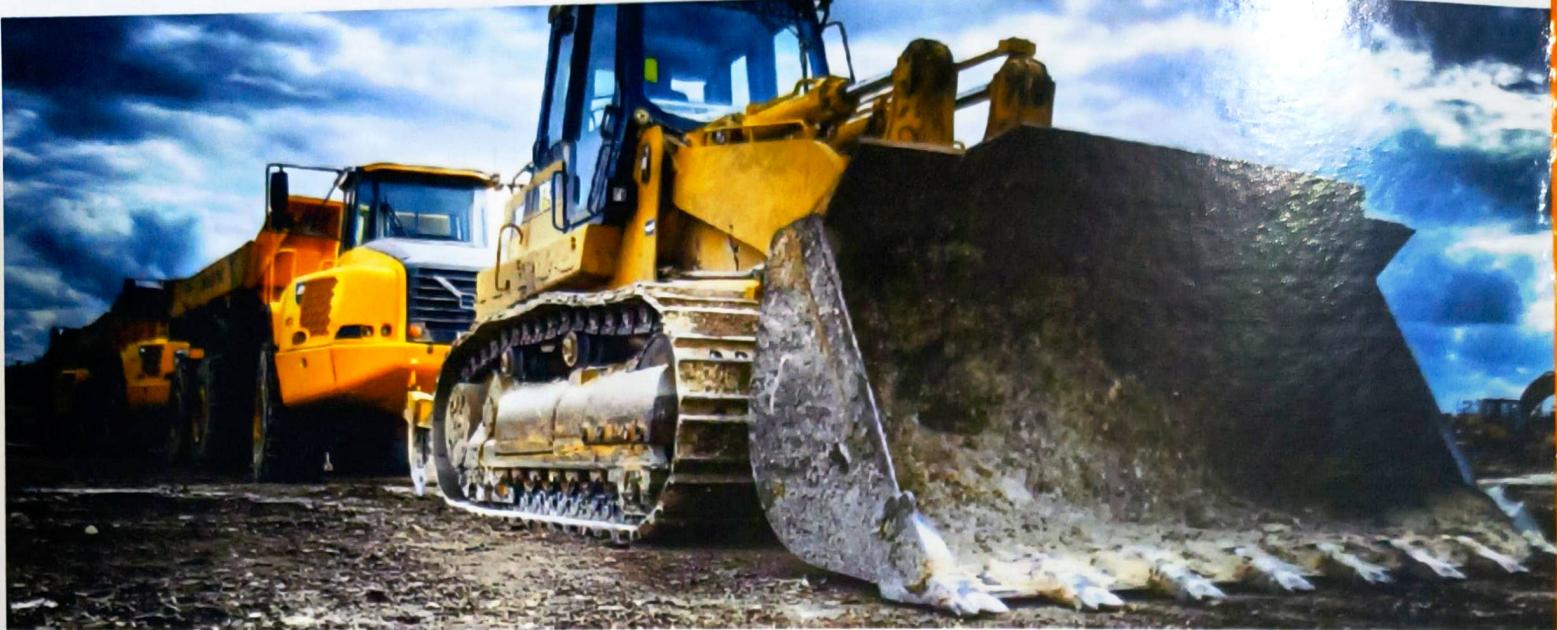
WPZ pumps

Q=17 up 40m³/h
H=120 up 580m

Applications

Boiler feeding, Sprinkler systems, Technological processes

Our Principals - AFEX



PORTFOLIO

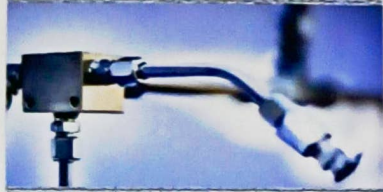
AFEX knows the mining industry and the demands of your operation. Our fire suppression systems are **purpose built** to withstand everyday abuse - above or below ground. No other fire suppression system manufacturer beats AFEX reliability or support

OVER 70% OF OUR BUSINESS IS MINING.

Safety never takes a break. That's why companies like Barrick, Newmont, Vale, Grupo Mexico, and more choose AFEX to maximize their safety and productivity with proven solutions.


SYSTEM FEATURES

Stainless Steel Tubing Distribution



Rugged construction
Less costly and timely than replacing hoses
Clean, organized appearance once installed for easy maintenance
Virtually maintenance free

Conical Discharge Nozzle



Broad distribution of dry chemical agent
Total flooding to maximize coverage
Spring-loaded hinges keep nozzles clear of debris
Less maintenance than blow-off caps

Automatic Detection System



Linear wire detects fire anywhere along length of cable
Sensors activate automatically when they reach a preset temperature
Manufactured to meet or exceed commercial, industrial and military specs

Control Unit



Microprocessor technology with LCD display
Audible and visual signals alert to problem or alarm conditions
Signal log for troubleshooting
Battery and power

CHOOSING THE RIGHT FIRE SUPPRESSION

THERE IS NO "ONE-SIZE-FITS-ALL" SOLUTION

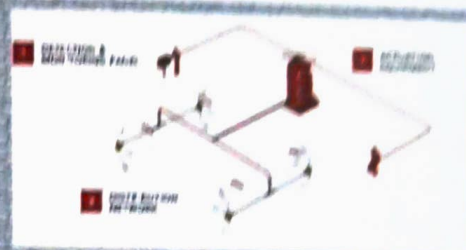
There are many factors that determine the proper fire suppression system for a piece of mobile equipment, including the size, operation and unique hazards of the industry. Every AFEX fire suppression system is purpose-built to withstand the abuse of your work environment. There are three main types of fire suppression systems:

- Dry chemical systems
- Liquid agent systems
- Dual agent systems (dry and liquid)



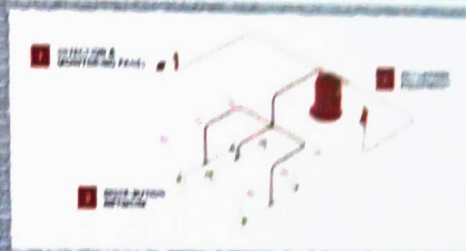
Dry Chemical System

Pound for pound, provides the fastest fire knockdown and greatest total coverage. Delivers three dimensional protection against common threats including Class A (debris), Class B (fuel), and Class C (electrical) fires, making it the most versatile agent for heavy equipment.



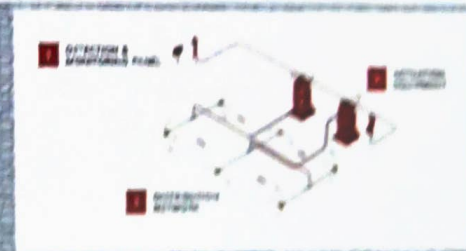
Liquid Agent System

Targets hot surfaces and separates hydrocarbon molecules to suppress Class A (debris) and Class B (fuel) fires. Provides exceptional cooling and protection against fire reignition.



Dual Agent System

Maximizes your protection by applying two different agents targeted at different hazards. Dry chemical provides fast knockdown and coverage while liquid agent targets hot surfaces for suppression and cooling. NFPA 122 requires dual agent for hydraulic shovels.



GLOBALLY CERTIFIED

Product certifications are more than just logos on our products. These international third-party approvals and certifications are critical to ensuring a vehicle fire suppression system is properly designed to protect off-road equipment and endure the rigors of day-to-day operation in the field.

AFEX fire suppression systems are rigorously tested to meet extreme conditions and pass specific fire tests designed to simulate real risks of off-road equipment.

Not all "approvals" are the same. Your fire suppression system should meet standards that apply to off-road equipment, such as AS 5062 and FM 3950. Insurance companies will require your system to meet these standards, testing criteria and that they are listed by a recognized FM or Active Fire symbols in order to provide coverage for fire related incidents.

AFEX is committed to an ongoing testing program to attain and maintain the latest industry standards for vehicle fire protection.



Our Principals - MINE LINE



TS Mining and Equipment Solutions (P) Ltd. has a strategic alliance with Mine Line, for specific turnkey projects in the water treatment and metal mines sectors.

Mine Line Pvt. Ltd. is a leading manufacturer of electrical equipment, founded in 1977 by an eminent mining engineer - Sri Birendranath Mukherjee, who had a phenomenal insight into the mining industry and its complexity of problems.

UNITIZED SUB STATION



FIELD SWITCH UNIT



The Field switch unit is widely used in surface mines to distribute power to Drill machine, Shovel etc.

There is also provision to connect incoming and outgoing cables through HT plug and socket arrangement.

Rating - upto 800 A, 11 KV, 3 phase.

VCB COUPLED WITH STARTER PANEL



The VCB coupled with starter panel, which is of simple robust construction, is the best fit to fulfill any indoor or outdoor mine pumping station/substation requirements.

This is a composite unit consisting of Circuit Breaker/ Bus Coupler and Starter units as per customized combinations of individual units.

Our



Initiatives

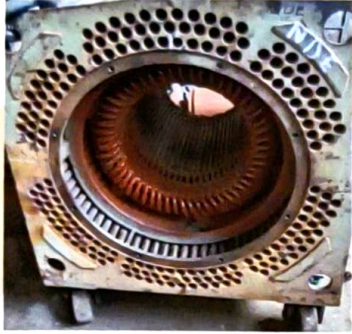
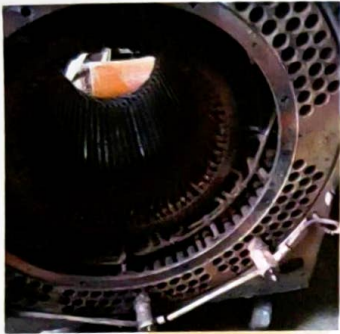
REPAIR OF 130HP MOTOR ARMATURE



REPAIR OF 290KW GENERATOR ARMATURE



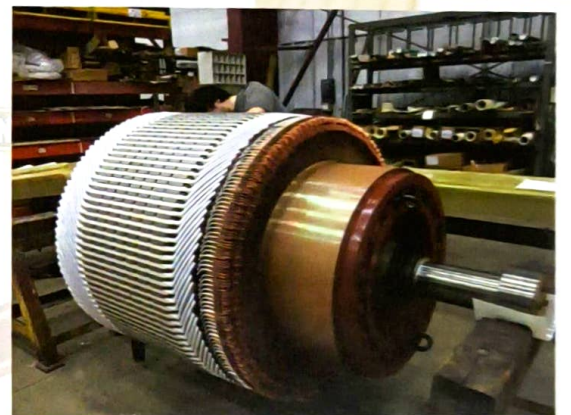
REPAIR OF 340KW MOTOR



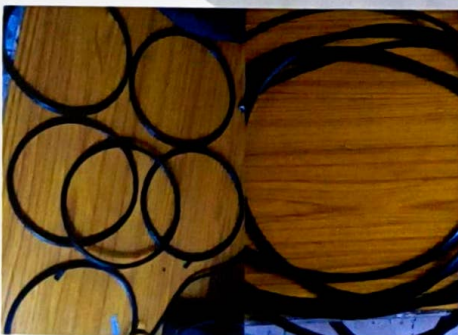
MANUFACTURING OF SLIP RING



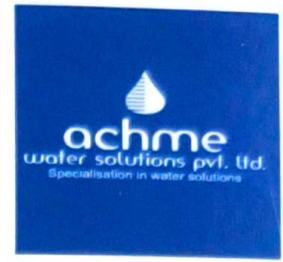
MANUFACTURING OF NEW MOTOR SHAFT



MANUFACTURING OF HEMM SPARES



OUR CUSTOMERS



OUR OEM PARTNERS



AFEX
FIRE SUPPRESSION SYSTEMS



Our Locations & Office Address

Registered. Office

🏠 5th Floor, 8, Lyons Range,
Kolkata - 700 001

☎ +91-33-4005 1521

✉ info@tsmining.in

Corporate Office

🏠 703, Meadows, Sahar Plaza
Complex, Andheri-Kurla Road,
Andheri (E), Mumbai - 400 059

☎ +91-22-2838 1348 / 49

✉ info@tsmining.in